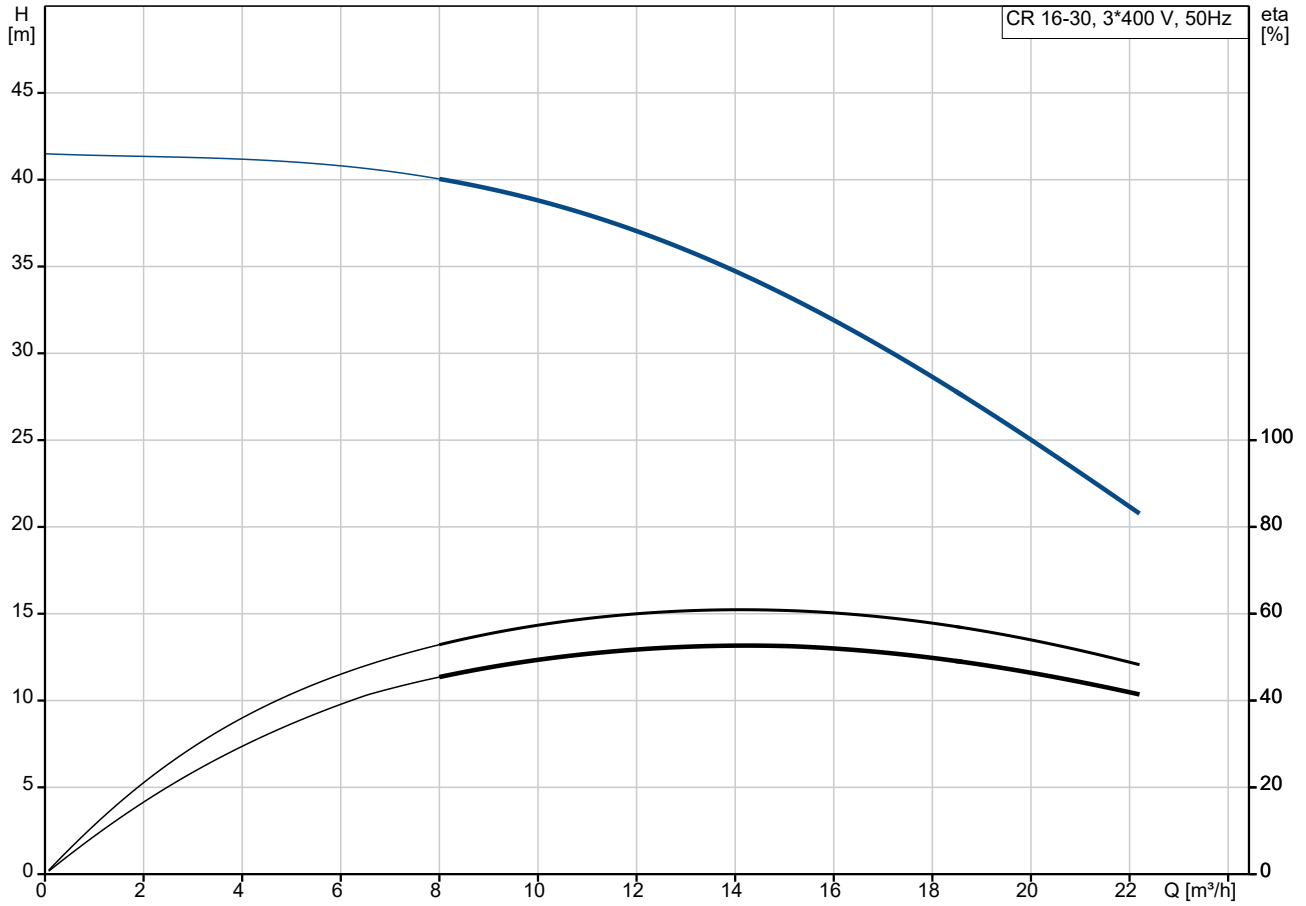
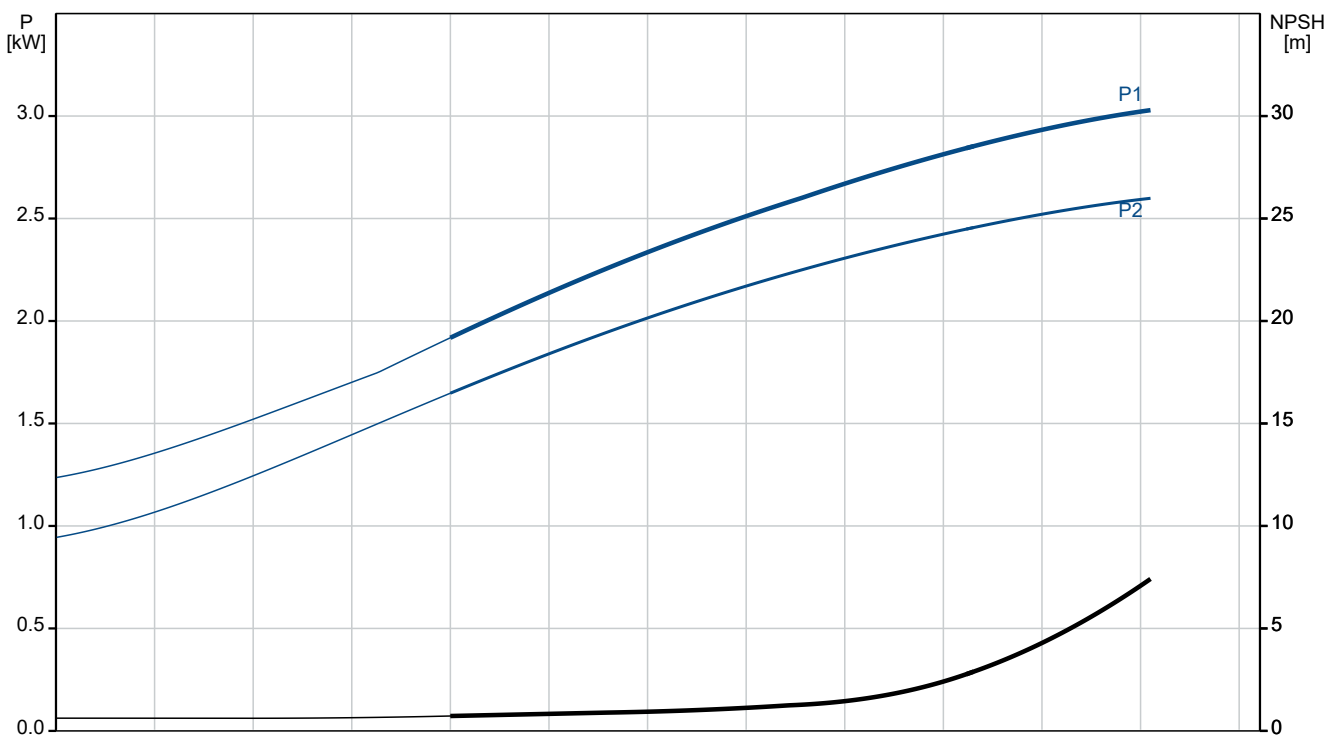


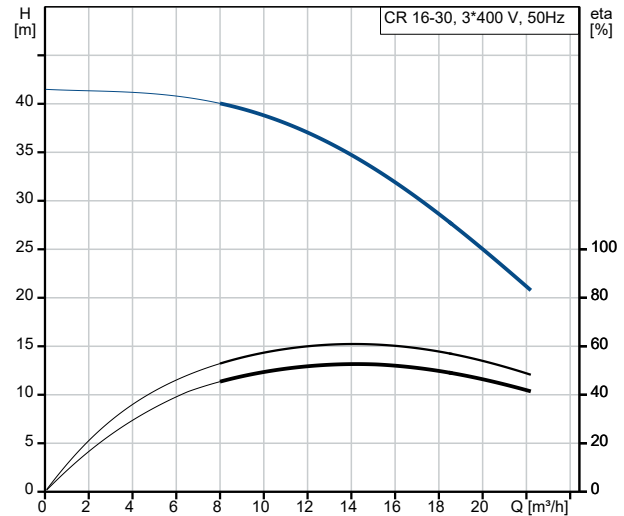
## 33777103 CR 16-30 50 Hz



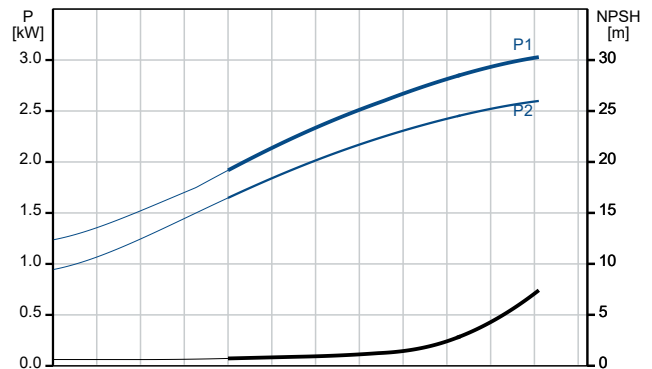
Pumped liquid = Water  
 Liquid temperature during operation = 20 °C  
 Density = 998.2 kg/m³



| Description                              | Value                        |
|--|------------------------------|
| <b>General information:</b>              |                              |
| Product name:                            | CR 16-30                     |
| Product No:                              | 33777103                     |
| EAN number:                              | 5708601061684                |
| Price:                                   |                              |
| <b>Technical:</b>                        |                              |
| Pump speed on which pump data are based: | 2900 rpm                     |
| Rated flow:                              | 16 m <sup>3</sup> /h         |
| Rated head:                              | 34.4 m                       |
| Stages:                                  | 3                            |
| Impellers:                               | 3                            |
| Low NPSH:                                | N                            |
| Code for shaft seal:                     | AUUE                         |
| Pump No:                                 | 33770003                     |
| Pump version:                            | A                            |
| Model:                                   | B                            |
| <b>Materials:</b>                        |                              |
| Base:                                    | Cast iron                    |
| Base:                                    | EN-JL1030                    |
| Base:                                    | 25 B                         |
| Impeller:                                | Stainless steel              |
| Impeller:                                | EN 1.4301                    |
| Impeller:                                | AISI 304                     |
| Material code:                           | A                            |
| <b>Installation:</b>                     |                              |
| t max amb:                               | 40 °C                        |
| Max pressure at stated temp:             | 16 bar / 120 °C              |
| Type of connection:                      | DIN                          |
| Size of inlet connection:                | DN 50                        |
| Pressure rating for connection:          | PN 16 / PN 25                |
| Flange size for motor:                   | F130                         |
| Connect code:                            | F                            |
| <b>Liquid:</b>                           |                              |
| Pumped liquid:                           | Water                        |
| Liquid temperature range:                | -15 .. 120 °C                |
| Selected liquid temperature:             | 20 °C                        |
| Density:                                 | 998.2 kg/m <sup>3</sup>      |
| <b>Electrical data:</b>                  |                              |
| Motor type:                              | 100LB                        |
| Rated power - P2:                        | 3 kW                         |
| Mains frequency:                         | 50 Hz                        |
| Rated voltage:                           | 3 x 220-240 D/380-415 Y<br>V |
| Rated current:                           | 10.8/6.25 A                  |
| Starting current:                        | 780-850 %                    |
| Cos phi - power factor:                  | 0.88-0.82                    |
| Rated speed:                             | 2880-2910 rpm                |
| Motor efficiency at full load:           | 85 %                         |
| Motor efficiency at 3/4 load:            | 87-86 %                      |
| Motor efficiency at 1/2 load:            | 86.5-85 %                    |
| Number of poles:                         | 2                            |
| Enclosure class (IEC 34-5):              | IP55                         |
| Insulation class (IEC 85):               | F                            |
| Built-in motor protection:               | PTC                          |
| Motor No:                                | 85805810                     |
| <b>Others:</b>                           |                              |
| Net weight:                              | 55 kg                        |
| Gross weight:                            | 59 kg                        |



Pumped liquid = Water  
 Liquid temperature during operation = 20 °C  
 Density = 998.2 kg/m<sup>3</sup>





Company name:

Created by:

Phone:

Date:

21/03/2023

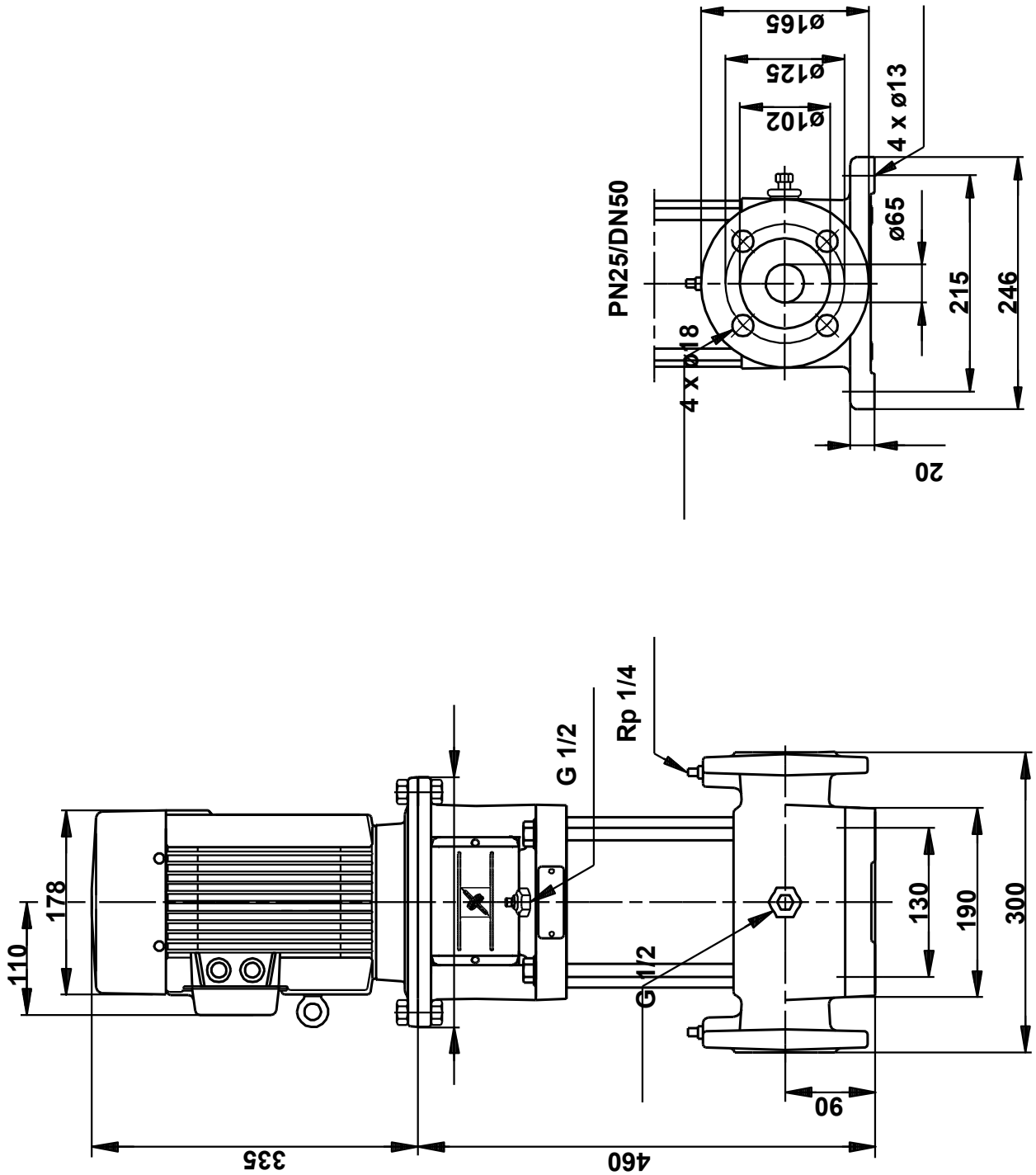
**Description**

**Value**

Shipping volume:

0.1 m<sup>3</sup>

## 33777103 CR 16-30 50 Hz



Note! All units are in [mm] unless others are stated.  
Disclaimer: This simplified dimensional drawing does not show all details.